

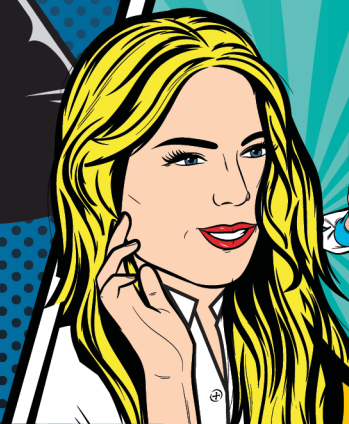
THE HOSPICE HERALD

Cransley Hospice

Registered Charity No. 1151018

BAMM

A
“SUPER”
READ FOR ALL
OUR CORPORATE
HEROES



NOT ALL HEROES WEAR CAPES

CELEBRATING ALL OUR INCREDIBLE BUSINESS PARTNERS

VOL. 1
AUTUMN 2020
(LIMITED) EDITION

AUTUMN 2020

WELCOME TO THE HOSPICE HERALD

Celebrating our incredible corporate heroes!

Don't miss out! Please share the Hospice Herald with your team



HELLO AND THANK YOU:

Welcome to the first edition of our corporate newsletter.

2020 has been such a challenging year for many but we are truly grateful for the continued support that the local business community has given us.



We know that there is a superhero in everyone just waiting to spring into action and we have been blown away by so many ordinary people doing extraordinary things.

I hope that you enjoy our 'Super' read and should you and your colleagues wish to join our team of corporate heroes we'd love to hear from you.

Best wishes,

Rachel Herrick

Director of Income Generation & Communications

IN THIS EDITION

A message from Rachel Herrick,
Director of Income Generation and
Communications

Page 1

Partnership with KRFC

Page 2

Charity of the Year case study:
Weetabix

Page 3 & 4

Some BRILLIANT team building
opportunities!

Page 5

Kettering JobCentre & Bosworth's
Garden Centre support the Hospice

Page 6

Another showcase of a local
Corporate Hero

Page 7

More brilliant support from our local
partners

Page 8

Supporting the Hospice from your
home, office or by volunteering

Page 9

CRANSLEY HOSPICE AND KETTERING RUGBY FC ANNOUNCE PARTNERSHIP

KRFC and Cransley Hospice Trust are delighted to announce a new and exciting two-year event-based partnership.

The two established Kettering organisations and their fundraising activities have been at the heart of the North Northamptonshire community for many years and the relationship has been born out of a common goal to bring the community together to raise £50,000 which will be split between the two neighbours.

Rachel Herrick, Director of Income Generation and Communications said, "We welcomed the opportunity to be partnered with KRFC for these events and look forward to working with the team to bring the ideas to fruition for the broader community which will help us to reach the fundraising target."

The coronavirus pandemic has affected the fundraising events of both partners who have had to cancel or postpone many of their planned summer fundraising events.

Doug Bridgeman from KRFC said "Kettering Rugby Club is delighted to announce its agreement with Cransley Hospice Trust. Cransley Hospice and KRFC are very close geographically, so this is an opportunity to cement our relationship whilst acknowledging that many of our members and their families have benefited from the Hospice's care and support. There is already an existing special affinity as both parties have worked together on several projects over the past few years".

Cransley Hospice has now agreed to expand our collaboration to benefit both parties and demonstrate how two local establishments can help the whole community. This new agreement will see both parties working together on a 50/50 basis to organise several exciting new fundraising projects.

**THIS IS AN
OPPORTUNITY TO
CEMENT OUR
RELATIONSHIP
WHILST
ACKNOWLEDGING
THAT MANY OF
OUR
MEMBERS AND
THEIR FAMILIES
HAVE BENEFITED
FROM THE
HOSPICE'S CARE
AND SUPPORT**
DOUG BRIDGEMAN



**WHAT'S
ON!**

**Keep up to date
with our events**

Visit:

www.cransleyhospice.org.uk/events
and follow us on social media.

CHARITY OF THE YEAR

We were delighted when Weetabix chose to support Cransley Hospice as their Charity of the Year for 2019.

Here is a roundup of their action-packed year which raised £10,000 for the Hospice! We are very grateful for the support of one of our area's most iconic brands and companies.

Earlier this year, Weetabix delivered a big cheque for £10,000 along with hampers, goody bags and product to the hard-working nurses and staff at Cransley Hospice.

To fundraise the incredible £10,000 over the past year, the staff at Weetabix held baking competitions, flash mobs, treasure hunts, bingo evenings and even a summer fundraising event with a giant Weetabix.

Representatives from Cransley Hospice Trust also joined in with some of the events, including judging the baking competition.

The money raised by the staff was matched with £5,000 from Weetabix Food Company to bring the total to just over £10,000, making Weetabix one of Cransley Hospice's most successful Charity of the Year Partnerships.

Cransley Hospice has continued to provide specialist palliative care for patients with complex needs throughout the nationwide lockdown as a result of the Coronavirus pandemic.

CAN YOU HELP? The pandemic has had a significant impact on our fundraising with our events programme postponed or cancelled, our shop income affected and our supporters unable to hold their own events. **We are looking to recruit new corporate heroes who can offer their support.**



Stuart Branch, Group People and IT Director at Weetabix, said,

“Giving back to the local Northamptonshire community is an important part of our charity ethos here at Weetabix and we’re very proud to have worked with Cransley Hospice.”

“The staff have had a lot of fun raising the money, especially throwing wet sponges at each other during the Summer Fundraising Day and we are delighted to be able to donate £10,000 to Cransley, alongside hampers and goody bags for the staff at the hospice.”



SHOWCASE: WEETABIX

Louise Preedy, Community Fundraising Manager at Cransley Hospice, said, "We are incredibly grateful to Weetabix and all the staff involved for choosing to support Cransley as their charity of the year. We know too well the hard work and effort that goes into raising money and would like to thank everyone that has been involved. The money raised is more important than ever right now as it costs around £1.4M a year to run the hospice and during the lockdown many of our usual fundraising activities and events have had to stop."

Weetabix Food Company announced Cransley Hospice as one of its charity partners following a vote by employees in 2019.



Become a Corporate Fundraising

Hero: the benefits for your business

We are always incredibly grateful to receive such loyal and generous support from many local and national businesses. As well as strengthening existing relationships, we welcome the opportunity to work with new businesses and corporate supporters for the first time.

We believe that corporate partnerships can provide mutual benefit and offer so much more than just financial support. We'll take the time to get to know you and your business supporting you to develop a tailored and engaging partnership plan. We can help you to raise your profile in the local community and motivate your staff to get involved too.

Whether it is a one-off fundraiser you are interested in holding, volunteering your time as a company to help at one of our events, taking part in a team challenge or even choosing us as your Charity of the Year, we are here to support you along your fundraising journey.

- ✓ **Achieve your corporate social responsibility objectives** by supporting a prominent & respected **local** charity.
- ✓ **Gain brand exposure** through regular local social media and press coverage of Hospice activities & event sponsorship.
- ✓ **Great team building opportunities** can be achieved by participating in fundraising activities and events.
- ✓ **Donations don't have to be financial. You can support us with 'Gifts in Kind':** any goods or services you may have to offer are always gratefully received.
- ✓ **Volunteer your time:** your business will get priority contact for any volunteering opportunities that arise at the Hospice.
- ✓ **Team building:** sign up to one of our Challenge Events for a brilliant team-building opportunity.

GET INVOLVED!



Building Society

NATIONWIDE'S ANNUAL QUIZ NIGHT FOR CRANSLEY HOSPICE

Back in early March, colleagues from Nationwide branches from across Northamptonshire joined together to hold a brilliant quiz night at Wellingborough's Hind Hotel.

This is the latest in a series of fundraising events held by the Nationwide team in support of the Hospice. A big thank you for their continued support!



LOOKING AHEAD

*Plenty of excellent team
building opportunities:*

30th November - 31st December:

Festive Feet 2020

22nd May 2021:

Snowdon at Night Trek

13th June 2021:

Cycle for Cransley

25th June 2021:

Hadrian's Wall Charity Trek Challenge

14th July 2021:

London to Paris Cycle Challenge

7th August 2021:

Mudnificent 7

12th August 2021:

Cycle Wales end-to-end

19th September 2021:

20th Cransley Hospice Road Race

FRESH-TASTIC SUPPORT FROM THE NORTHAMPTON GROCER

Sean Connolly, who owns The Northampton Grocer, kindly supplied 60 fresh food boxes for our dedicated staff at the Hospice.

In recognition of all their hard work in such challenging times, we wanted to do something to help and set out to purchase some fresh produce boxes to give to the staff as a token of our thanks.

We were delighted when The Northampton Grocer responded to our request so quickly back in April.



KETTERING JOBCENTRE CHOOSE CRANSLEY HOSPICE AS THEIR CHARITY OF THE YEAR!

We were delighted when the Kettering JobCentre & DWP team got in touch to say they had chosen to support Cransley Hospice as their Charity of the Year for 2020 and 2021. A particular 'thank you' must go to Ady Cicceri who took part in a sponsored skydive in September!



Corporate
Fundraising
Heroes -
Assemble!

GREEN-FINGERED GENEROSITY FROM BOSWORTH'S GARDEN CENTRE

Bosworth's Garden Centre have generously supported Cransley Hospice for many years. They are annual supporters of our Open Gardens programme which will return in 2021. They have also kindly donated many raffle prizes and are currently supporting our Christmas Tree Recycling Project which we hope will raise more vital funds for the Hospice.

WOW!

STUNNING SUNFLOWERS RAISE £480 FOR CRANSLEY HOSPICE



We would like to say a huge thank you to Harrington Farms Ltd. who very kindly donated £480 to Cransley Hospice from the proceeds of their sunflower sales! Their stunning sunflower fields near Desborough proved very popular this Summer.

RECRUITING
CORPORATE
HEROES
NOW



CAN YOU HELP? We are always keen to partner with local farms, gardeners and nurseries for green-fingered fundraising ideas like this!

LOCAL BUSINESS SUPPORT SHOWCASE: D ROBINSON & CO.

D. Robinson & Co, based in Desborough, have supported Cransley Hospice for many years by managing our textile and gift recycling bins located around the local area. Simply donate any unwanted clothing, shoes, books or DVDs you may have at one of these bins and support Cransley Hospice in the process!



We are looking for new locations where new bins can be located. If you can suggest a suitable and secure hard-standing area, such as a public car park, please get in touch with your ideas.



CURRENT LOCATIONS:

Textile Banks

- Corn Market Hall, Kettering
- Briars Pub, Kettering
- Recreation Ground, Finedon
- Stirrup Cup Pub, Barton Seagrave
- Car Park, Churchill Way, Burton Latimer
- Grange Shops, Kettering
- Ise Lodge Community Centre, Kettering

- Co-op, High Street, Thrapston
- Morrisons, Kettering
- Leisure Centre, Desborough
- Co-op, Desborough

Book Banks

- St. Mary's Hospital, London Road, Kettering
- Cornmarket Hall, Kettering
- Morrisons, Kettering
- Co-op, Desborough

CHIN-CHIN! WARNER'S DONATE GIN TOUR

A big thank you to Warner's, who kindly donated a Curiosity Tour, Honeybee gin and recipes for our **Little Big Night In** event back in April.

This generous donation follows last year's successful partnership between Warner's and Cransley Hospice which delivered our brilliant 'Urban Pollinator Garden'.



THE SOUND OF SUCCESS: CRANSLEY HOSPICE TEAMS UP WITH 2 LOCAL RADIO STATIONS FOR LUNCHTIME QUIZ

**Shire
Sounds**

We would like to thank Shire Sounds and Qube Radio for kindly hosting two virtual quiz events which were held in support of the Hospice in June and July. This offered a fun lunchtime activity for anyone working from home - we were even joined by one of Qube Radio's listeners all the way from Canada!

We look forward to strengthening our working relationship with these two great local radio stations, and hope you can find time to give them a listen:

www.quberadio.co.uk • www.shiresoundsradio.co.uk



MORE LOCAL BUSINESSES THAT HAVE SO GENEROUSLY SUPPORTED US THIS YEAR:



▲ **Millbrook Healthcare** donated masks to the Hospice.



▲ **The Old Swan, Earls Barton** donated a 'Pub in a Box' auction prize.



▲ **Baby Fish Gifts in Great Addington** donated a huge amount of their stock, which will be resold to raise funds for the Hospice.



▲ **ESB Corby Power Station** donated thermometers, blood pressure monitors, cuffs and pulse oximeters.



▲ **Saxby's Cider** donated a Cidery Tour auction prize.



▲ **The Stirrup Cup** supported our choir with free room hire.

MORE WAYS TO SUPPORT CRANSLEY HOSPICE FROM YOUR HOME, OFFICE OR BY GIVING YOUR TIME

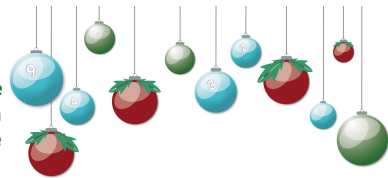
Buy a Lottery Gift Membership

Christmas is a time for exchanging gifts, sharing food and spending time with family. Why not give your loved ones a gift that really matters, a lottery membership in support of Cransley Hospice, allowing us to continue providing palliative and end of life care for local people this Christmas.

It is a unique and special gift that keeps giving as it gives the recipient a chance to win cash prizes every week they are in the draw up to £25,000. Your Hospice Lottery gift memberships are available from £10 for 10 weeks in the draw or for £52 you can buy a membership that lasts the whole year.

The festive season is set to look a lot different this year. Local employers may be stuck for inspiration on ways to treat their staff this Christmas to replace the traditional office party. The good news is that gift memberships with Your Hospice Lottery can be purchased as a **corporate gift pack!** It is a gift that not only says 'thank you' but also gives back to your local community. Plus, employees can be in with a chance of winning one of 176 weekly cash prizes, with a top prize of £1,000. There is also a chance to win up to £25,000 in the rollover draw! *Please note the recipient and purchaser must be 16 years and over.*

To purchase Your Hospice Lottery gift memberships, simply visit yourhospicelottery.org.uk/gift or telephone the lottery team on 0800 285 1390.



Give the gift of
compassion.



When you purchase a lottery gift membership, the proceeds could go towards more than 2 hours of bereavement counselling.

SUPPORT CRANSLEY FROM THE COMFORT OF YOUR SOFA:



THE GIVING MACHINE
GENERATE DONATIONS FOR
CRANSLEY HOSPICE

<https://www.thegivingmachine.co.uk>



CRANSLEY EBAY SHOP
SHOP OR DONATE TO OUR
EBAY SHOP

<https://www.ebay.co.uk/str/cransleyhospice>
trust



AMAZON SMILE
THINK OF US ANYTIME YOU SHOP
ON AMAZON

<https://smile.amazon.co.uk>



GIVE AS YOU LIVE
RAISE FREE FUNDS
FOR US ONLINE

<https://www.giveasyoulive.com>

FESTIVE FEET 2020

30th November
- 31st December

It's time for corporate heroes
to throw off your capes and dig
out your **FANCIEST**, most
FESTIVE FOOTWEAR to
support Cransley Hospice!



Festive Feet offers a fun team-building opportunity for your company and it's super flexible - everyone can take part whether they're working from home or from the office.

Sign up today to receive a fundraising pack with all the details:
www.cransleyhospice.org.uk/event/festive-feet-2020/



Registered with
**FUNDRAISING
REGULATOR**

REGISTERED CHARITY NO. 1151018

FOLLOW US ON OUR SOCIAL
CHANNELS!



**A BIG
THANK YOU
TO ALL OUR
CRANSLEY HEROES**

WOW!!



**Cransley
Hospice** 

Cransley Hospice Trust,
Fundraising Office,
St Mary's Hospital,
London Road,
Kettering,
NN15 7PW.

01536 452 423
info@cransleyhospice.org.uk

**THAT'S
ALL
FOLKS!**

www.cransleyhospice.org.uk